

Updating the Firmware (TX-NR901/801/801E/900)

Before Updating the Firmware

The Net-Tune Firmware Updater makes use of the operation environment of the Net-Tune network to update the firmware. Before you start updating the firmware, make sure the network environment is ready for operational use, including TCP/IP settings.

Remember that installation and version updating operations should be carried out on the user's authority.

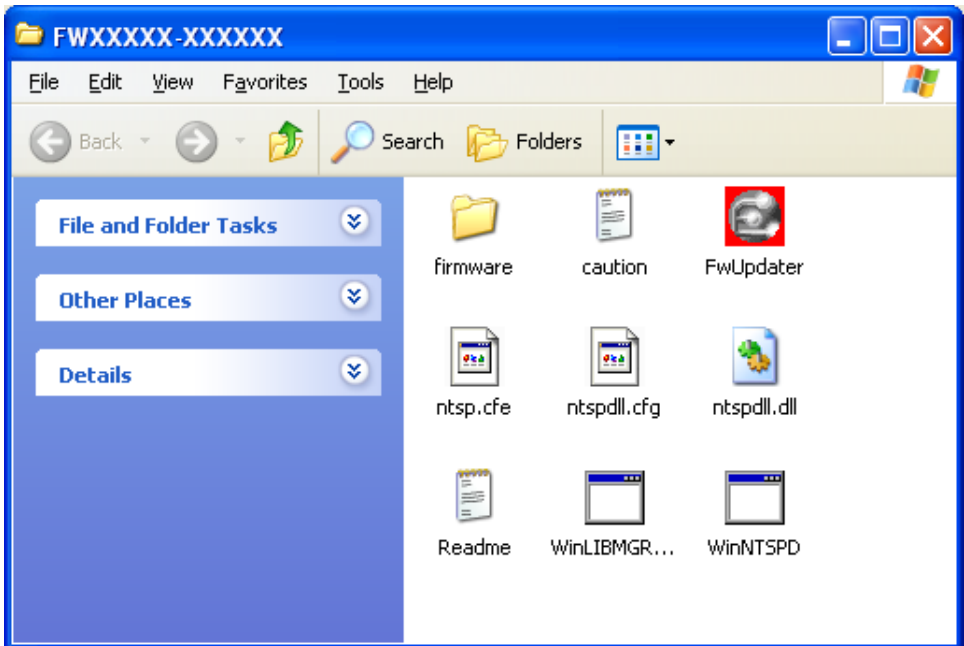
Note:

Updating the firmware initializes the AV Receiver, that means all the settings of the unit, including those for Speaker Setup, Input Setup, etc. and the information on the preset Internet radio stations and FM/AM radio stations are erased. Please manually restore the lost information such as the radio station preset information after firmware updates. For this purpose, you can use the "Setting Memo" column on the last pages of this document to write down the stored settings.

Updating the Firmware

Open the unzipped folder you have downloaded from the web site.

For information about the upgraded firmware, refer to the "Readme.txt" contained in the folder.



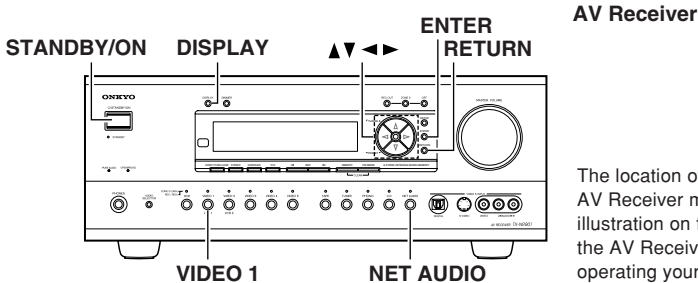
Updating the Firmware (TX-NR901/801/801E/900)

■ Checking the Firmware Version

Updating the firmware requires about 25 minutes to complete. Make sure that you have enough time before starting the following procedure.

Note:

- Exit all applications (including Net-Tune Central) running on your PC before you start the Net-Tune Firmware Updater. Moreover, during firmware update, do not start Net-Tune Central.
- A power interruption, if occurring on the AV Receiver or your PC during a firmware update, not only prevents successful updating operation but also may cause damage to the AV Receiver. Pay highest attention to circuit breaker tripping, power failure, battery run-out, and other causes of power interruption.
- During updating operation, do not connect/disconnect LAN cables to/from other network equipment or perform operation that may put loads on the network.
- Before performing the update procedures, refer to the attached instruction manual and complete the connections between the PC, router and AV Receiver.



AV Receiver

The location of the buttons on the AV Receiver may differ from the illustration on the left depending on the AV Receiver you use. When operating your AV Receiver, use the same name button.

1. **Connect the AV Receiver and your PC via Ethernet.**
2. **Plug the power code of the AV Receiver into an outlet.**
3. **Launch the Net-Tune Firmware Updater.**

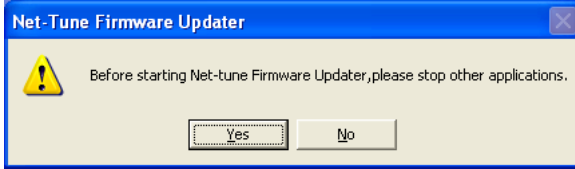
Double-click the “FwUpdater.exe” file on the desktop.



Updating the Firmware (TX-NR901/801/801E/900)

4. A dialog box appears, prompting you to confirm that no other programs are running on the computer.

Confirm the message and click “Yes.”



The Net-Tune Firmware Updater starts.

This is the name of your PC. You can refer to this information when you confirm the update server name during the subsequent procedures.

Click this button to confirm the version of the Net-Tune Firmware Updater.

Operating precautions and other information are shown here.

When the updating operation is completed, click this button to exit the Net-Tune Firmware Updater. **Do not click it until the updating procedure completes.**

5. When the AV Receiver is in the standby state, while pressing the NET AUDIO button, continue to press the STANDBY/ON button.

When “Update Utility” appears on the front display, release the buttons and wait until “1.F/W Update” appears. It will take about 15 seconds until “1.F/W Update” appears.



Updating the Firmware (TX-NR901/801/801E/900)

6. Press the ENTER button.

The name of your PC appears few seconds after “mSVR: -----” is displayed.

Make sure that this name is the same as the name shown as “Computer Name” in the Net-Tune Firmware Updater window.

If a different name is shown, use the ◀/▶ cursor button on the AV Receiver front panel to change it.

mSVR: ----- → mSVR:Net-Tune PC (Ex.)

7. Press the ENTER button.

The version number of the firmware you overwrite with the new firmware appears few seconds after “F/W: -----” is displayed.

F/W :----- → F/W :00.00.03 (Ex.)

8. Press the ENTER button.

“Update OK? →” appears.

Update OK? →

9. Press the ► cursor button.

The updating begins. It will take about 25 minutes to complete.

The main program (1stMPU PRG), the sub program (2ndMPU PRG), and the network program (3rdMPU PRG) will be loaded in this order.

The progress for updating these programs is shown as a percentage (%), respectively. The updating has been completed if “UpdateComplete” is shown.

UpdateComplete

Note:

Although the updating progress indication (%) may stop temporarily, it is not a malfunction. Just wait for awhile. However, if “UpdateComplete” does not appear even after waiting for 20 to 30 minutes, it may be a malfunction. If so, once unplug the power cable and follow the procedure from the beginning. If doing this remedy still does not solve the problem, contact your Onkyo dealer.

10. Press the ENTER button.

The message in the display changes back to “1.F/W Update.”

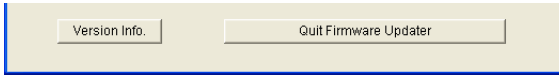
11. Select “→ Exit” using the ▲/▼ cursor button on the AV Receiver front panel.

12. Press the ► cursor button on the front panel.

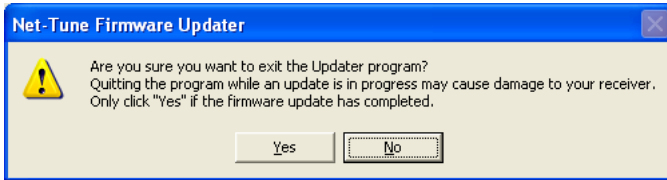
The AV Receiver enters the standby state.

Updating the Firmware (TX-NR901/801/801E/900)

13. At the PC, click the “Quit Firmware Updater” in the Net-Tune Firmware Updater window.



14. When a confirmation dialog box appears, click “Yes.”



■ Removing the Firmware Updater

After making sure that the firmware update is completed successfully, you may delete the Net-Tune Firmware Updater Folder.

1. Make sure that the Update Server is not running.
2. Right-click the folder and then choose “Delete,” or drag the folder to the trash.

Updating the Firmware (TX-NR901/801/801E/900)

■ Checking the Firmware Version

Once you have finished the updating procedure described above, check if the firmware is correctly updated.

1. **When the AV Receiver is in the standby state, while pressing the NET AUDIO button, continue to press the STANDBY/ON button.**

When “Update Utility” appears on the front display, release the buttons and wait until “1.F/W Update” appears. It will take about 15 seconds until “1.F/W Update” appears.

Update Utility



1. F/W Update

2. **Use the [▲/▼] cursor button on the AV Receiver front panel to display “2.F/W Version.”**

2. F/W Version

3. **Press the ENTER button.**

Once “Ver: xx.xx.xx” is displayed, the firmware has been successfully updated.

Ver :xx:xx:xx

4. **Press the RETURN button.**

Ver :xx:xx:xx



2. F/W Version

5. **Select “→ Exit” using the [▲/▼] cursor button on the AV Receiver front panel, and then press the [▶] button.**

The AV Receiver goes into standby.

Copyright Information

- The “Net-Tune” name and logo are registered trademarks of Onkyo Corporation.
- Pentium is a trademark of Intel Corporation in the United States.
- Microsoft, Windows, and Windows NT are registered trademarks of Microsoft Corporation in the United States and/or other countries.
- Adobe and Acrobat are trademarks of Adobe Systems Incorporated.
- All other company and product names described herein are either registered trademarks or trademarks of their respective holders.

Setting Memo

Write down the current settings in “Your Setting” columns.

Circle the item(s) in the options columns if available for your convenience.

Setting items and default settings may vary depending on your unit.

General preferences

0. Hardware Setup		Default setting	Your setting
1. Speaker Impedance	a. Minimum	6 ohms	
2. Surr Back/Zone2	a. Surr Back/Zone2	Surr Back	
3. IR IN Setup	a. Position	Main	

1. Speaker Setup		Default setting	Your setting
1. Speaker Config	a. Subwoofer	Yes	
	b. Front L/R	Small	
	c. Center	Small	
	d. Surr L/R	Small	
	e. Surr Back	Small	
	f. Crossover	80Hz (THX)	
2. Speaker Distance	a. Unit	feet/meters	
	b. Left	12.0 ft/3.60 m	
	c. Center	12.0 ft/3.60 m	
	d. Right	12.0 ft/3.60 m	
	e. Surr Right	7.0 ft/2.10 m	
	f. Surr Back R	7.0 ft/2.10 m	
	g. Surr Back L	7.0 ft/2.10 m	
	h. Surr Left	7.0 ft/2.10 m	
	i. Subwoofer	12.0 ft/3.60 m	
3. Level Calibration	a. Left	0 dB	
	b. Center	0 dB	
	c. Right	0 dB	
	d. Surr Right	0 dB	
	e. Surr Back R	0 dB	
	f. Surr Back L	0 dB	
	g. Surr Left	0 dB	
	h. Subwoofer	0 dB	
4. THX Audio Setup (Some models only)	a. THX Ultra 2 Subwoofer	No	
	b. Boundary Gain Compensation	Off	
	c. Distance between Surr Back Sp	0-12 inch (0-30 cm)	

Setting Memo

3. Audio Adjust		Default setting	Your setting
1. Tone Control	a. Bass	0	
	b. Treble	0	
2. Surround Speakers	a. Surround Speakers	Surround L/R	
3. Sound Effect	a. Re-EQ	Off	
	b. Upsampling	Off	
	c. Subwoofer	On	
	d. Late Night	Off	
	e. Dolby Headphone (Some models only)	On	
	f. Dolby H Mode (Some models only)	DH1	
4. Delay	a. A/V Sync	0.0 ms	
	b. Center	0.0 ms	
	c. Surr L/R	0.0 ms	
	d. Surr Back	0.0 ms	
5. LFE Level	a. Dolby Digital	0 dB	
	b. DTS	0 dB	
6. Mono	a. Academy Filter	Off	
	b. Input Channel	Auto L+R	
7. Theater-Dimensional	a. Listening Angle	40°	
	b. Center	Off	
	c. Front Expander	Off	
	d. Virtual Surr Level	0 dB	
	e. Dialog Enhance	Off	
8. Surround	a. Surr Mode (Analog/PCM)	Pro Logic II Movie	
	b. Surr Mode (D.F.2ch)	Pro Logic II Movie	
	c. Dolby D EX (Dolby D)	On	
	d. DTS-ES	Auto	
	Pro Logic II Music		
	e. Panorama	Off	
	f. Dimension	3	
	g. Center Width	3	
	Neo:6 Music		
	h. Center Image	3	
9. THX	a. Re-EQ (THX)	On	
	b. Decoder (2ch)	PL II Movie	
	c. THX Surround EX	Auto	
	d. THX Mode (Some models only)	Ultra 2 Cinema	
	d. DTS-ES	Auto	

Setting Memo

3. Audio Adjust		Default setting	Your setting
10. Mono Movie	a. Front Effect	On	
	b. Reverb Level	Middle	
	c. Reverb Time	Middle	
11. Enhanced 7	a. Front Effect	On	
	b. Reverb Level	Middle	
	c. Reverb Time	Middle	
12. Orchestra	a. Front Effect	On	
	b. Reverb Level	Middle	
	c. Reverb Time	Middle	
13. Unplugged	a. Front Effect	On	
	b. Reverb Level	Middle	
	c. Reverb Time	Middle	
14. Studio-Mix	a. Front Effect	On	
	b. Reverb Level	Middle	
	c. Reverb Time	Middle	
15. TV Logic	a. Front Effect	On	
	b. Reverb Level	Middle	
	c. Reverb Time	Middle	

Setting Memo

4. Preference		Default setting	Your setting
1. Volume Setup	a. Volume Display	Absolute	
	b. Muting Level	-∞ dB	
	c. Maximum Volume	Off	
	d. Power On Volume	Last	
2. Headphones Level	a. Headphones Level	0 dB	
3. OSD Setup	a. Background Color	Blue 1	
	b. Component Video	OSD On	
	c. Immediate Display	On	
	d. Display Position	Bottom	
	e. TV Format	Auto	
4. OSD Position		Center	

5. Network Setup		Default setting	Your setting	
1. IP Address	a. DHCP/AUTO-IP	On		
	b. IP Address	0.0.0.0		
	c. SUBNET Mask	0.0.0.0		
	d. Gateway	0.0.0.0		
	DNS Server			
	e. 1st	0.0.0.0		
	f. 2nd	0.0.0.0		
2. Proxy Setup	a. Proxy Server	Off		
	b. Proxy Address			
	c. Proxy Port	8080		
3. MAC Address	a. MAC Address	XX:XX:XX:XX:XX:XX		
4. Client Setup → Save Settings	a. Client Name	[Your Set Name] (Fix)		
	b. Wakeup on LAN	Off (Fix)		
	c. NTSP Port	60096		

Setting Memo

The settings when the input selector is in the DVD position

2. Input Setup		Default setting	Your setting
1. Digital Input	a. Digital Input	COAX 1	
	b. Digital Format	All	
2. Multichannel Setup	a. Multichannel	Yes	
3. Video Setup	a. Video	DVD	
	b. Component Video	INPUT 1	
4. Character Input	a. Character Display	No	
	b. Character		
5. IntelliVolume Setup	a. IntelliVolume	0 dB	
6. Listening Mode Preset	a. Analog/PCM	Stereo	
	b. PCM fs=96k	Stereo	
	c. Dolby D	Dolby D	
	d. DTS	DTS	
	e. D.F. 2ch	PL II/Neo:6	
	f. D.F. Mono	Mono	
AUDIO SELECTOR button setting		Auto (OPT1)	
7. 12V Trigger (Some models only)	a. Trigger A	On	
	b. Trigger B	On	

The settings when the input selector is in the VIDEO 1 position

2. Input Setup		Default setting	Your setting
1. Digital Input	a. Digital Input	COAX 2	
	b. Digital Format	All	
2. Multichannel Setup	a. Multichannel	No	
3. Video Setup	a. Video	VIDEO 1	
	b. Component Video	INPUT 2	
4. Character Input	a. Character Display	No	
	b. Character		
5. IntelliVolume Setup	a. IntelliVolume	0 dB	
6. Listening Mode Preset	a. Analog/PCM	Stereo	
	b. PCM fs=96k	Stereo	
	c. Dolby D	Dolby D	
	d. DTS	DTS	
	e. D.F. 2ch	PL II/Neo:6	
	f. D.F. Mono	Mono	
AUDIO SELECTOR button setting		Auto (COAX1)	
7. 12V Trigger (Some models only)	a. Trigger A	On	
	b. Trigger B	On	

Setting Memo

The settings when the input selector is in the VIDEO 2 position

2. Input Setup		Default setting	Your setting
1. Digital Input	a. Digital Input	COAX 3	
	b. Digital Format	All	
2. Multichannel Setup	a. Multichannel	No	
3. Video Setup	a. Video	VIDEO 2	
	b. Component Video	VIDEO	
4. Character Input	a. Character Display	No	
	b. Character		
5. IntelliVolume Setup	a. IntelliVolume	0 dB	
6. Listening Mode Preset	a. Analog/PCM	Stereo	
	b. PCM fs=96k	Stereo	
	c. Dolby D	Dolby D	
	d. DTS	DTS	
	e. D.F. 2ch	PL II/Neo:6	
	f. D.F. Mono	Mono	
AUDIO SELECTOR button setting		Auto (COAX2)	
7. 12V Trigger (Some models only)	a. Trigger A	On	
	b. Trigger B	On	

The settings when the input selector is in the VIDEO 3 position

2. Input Setup		Default setting	Your setting
1. Digital Input	a. Digital Input	OPT 3	
	b. Digital Format	All	
2. Multichannel Setup	a. Multichannel	No	
3. Video Setup	a. Video	VIDEO 3	
	b. Component Video	VIDEO	
4. Character Input	a. Character Display	No	
	b. Character		
5. IntelliVolume Setup	a. IntelliVolume	0 dB	
6. Listening Mode Preset	a. Analog/PCM	Stereo	
	b. PCM fs=96k	Stereo	
	c. Dolby D	Dolby D	
	d. DTS	DTS	
	e. D.F. 2ch	PL II/Neo:6	
	f. D.F. Mono	Mono	
AUDIO SELECTOR button setting		Auto (OPT3)	
7. 12V Trigger (Some models only)	a. Trigger A	On	
	b. Trigger B	On	

Setting Memo

The settings when the input selector is in the VIDEO 4 position

2. Input Setup		Default setting	Your setting
1. Digital Input	a. Digital Input	OPT4	
	b. Digital Format	All	
2. Multichannel Setup	a. Multichannel	No	
3. Video Setup	a. Video	VIDEO 4	
	b. Component Video	VIDEO	
4. Character Input	a. Character Display	No	
	b. Character		
5. IntelliVolume Setup	a. IntelliVolume	0 dB	
6. Listening Mode Preset	a. Analog/PCM	Stereo	
	b. PCM fs=96k	Stereo	
	c. Dolby D	Dolby D	
	d. DTS	DTS	
	e. D.F. 2ch	PL II/Neo:6	
	f. D.F. Mono	Mono	
AUDIO SELECTOR button setting		Auto (OPT4)	
7. 12V Trigger (Some models only)	a. Trigger A	On	
	b. Trigger B	On	

The settings when the input selector is in the VIDEO 5 position

2. Input Setup		Default setting	Your setting
1. Digital Input	a. Digital Input	OPT5 (Fixed)	—
	b. Digital Format	All	
2. Multichannel Setup	a. Multichannel	No	
3. Video Setup	a. Video	VIDEO 5	
	b. Component Video	VIDEO	
4. Character Input	a. Character Display	No	
	b. Character		
5. IntelliVolume Setup	a. IntelliVolume	0 dB	
6. Listening Mode Preset	a. Analog/PCM	Stereo	
	b. PCM fs=96k	Stereo	
	c. Dolby D	Dolby D	
	d. DTS	DTS	
	e. D.F. 2ch	PL II/Neo:6	
	f. D.F. Mono	Mono	
AUDIO SELECTOR button setting		Auto	
7. 12V Trigger (Some models only)	a. Trigger A	On	
	b. Trigger B	On	

Setting Memo

The settings when the input selector is in the TAPE position

2. Input Setup		Default setting	Your setting
1. Digital Input	a. Digital Input	OPT 2	
	b. Digital Format	All	
2. Multichannel Setup	a. Multichannel	No	
3. Video Setup	a. Video	Last Valid	
	b. Component Video	Last Valid	
4. Character Input	a. Character Display	No	
	b. Character		
5. IntelliVolume Setup	a. IntelliVolume	0 dB	
6. Listening Mode Preset	a. Analog/PCM	Stereo	
	b. PCM fs=96k	Stereo	
	c. Dolby D	Dolby D	
	d. DTS	DTS	
	e. D.F. 2ch	PL II/Neo:6	
	f. D.F. Mono	Mono	
AUDIO SELECTOR button setting		Auto (COAX3)	
7. 12V Trigger (Some models only)	a. Trigger A	On	
	b. Trigger B	On	

The settings when the input selector is in the TUNER position

2. Input Setup		Default setting	Your setting
1. Digital Input	a. Digital Input		
	b. Digital Format	(All)	
2. Multichannel Setup	a. Multichannel	No	
3. Video Setup	a. Video	Last Valid	
	b. Component Video	Last Valid	
4. Character Input	a. Character Display	No	
	b. Character		
5. IntelliVolume Setup	a. IntelliVolume	0 dB	
6. Listening Mode Preset	a. Analog/PCM	Stereo	
	b. PCM fs=96k	(Stereo)	
	c. Dolby D	(Dolby D)	
	d. DTS	(DTS)	
	e. D.F. 2ch	(PL II/Neo:6)	
	f. D.F. Mono	(Mono)	
AUDIO SELECTOR button setting		Analog	
7. 12V Trigger (Some models only)	a. Trigger A	On	
	b. Trigger B	On	

Setting Memo

The settings when the input selector is in the PHONO position

2. Input Setup		Default setting	Your setting
1. Digital Input	a. Digital Input	----	
	b. Digital Format	(All)	
2. Multichannel Setup	a. Multichannel	No	
3. Video Setup	a. Video	Last Valid	
	b. Component Video	Last Valid	
4. Character Input	a. Character Display	No	
	b. Character		
5. IntelliVolume Setup	a. IntelliVolume	0 dB	
6. Listening Mode Preset	a. Analog/PCM	Stereo	
	b. PCM fs=96k	(Stereo)	
	c. Dolby D	(Dolby D)	
	d. DTS	(DTS)	
	e. D.F. 2ch	(PL II/Neo:6)	
	f. D.F. Mono	(Mono)	
AUDIO SELECTOR button setting		Analog	
7. 12V Trigger (Some models only)	a. Trigger A	On	
	b. Trigger B	On	

The settings when the input selector is in the CD position

2. Input Setup		Default setting	Your setting
1. Digital Input	a. Digital Input	OPT 1	
	b. Digital Format	All	
2. Multichannel Setup	a. Multichannel	No	
3. Video Setup	a. Video	Last Valid	
	b. Component Video	Last Valid	
4. Character Input	a. Character Display	No	
	b. Character		
5. IntelliVolume Setup	a. IntelliVolume	0 dB	
6. Listening Mode Preset	a. Analog/PCM	Stereo	
	b. PCM fs=96k	Stereo	
	c. Dolby D	Dolby D	
	d. DTS	DTS	
	e. D.F. 2ch	PL II/Neo:6	
	f. D.F. Mono	Mono	
AUDIO SELECTOR button setting		Auto (OPT2)	
7. 12V Trigger (Some models only)	a. Trigger A	On	
	b. Trigger B	On	

Setting Memo

The settings when the input selector is in the NET AUDIO position

2. Input Setup		Default setting	Your setting
1. Music Server	a. Select Server	-----	
2. Playback OSD Display	a. Playback OSD Display	Full	
3. Video Setup	a. Video	Last Valid	
	b. Component Video	Last Valid	
4. IntelliVolume Setup	a. IntelliVolume	0 dB	
5. Listening Mode Preset	a. Analog/PCM	Stereo	
AUDIO SELECTOR button setting		Not Available With Net Audio	
7. 12V Trigger (Some models only)	a. Trigger A	On	
	b. Trigger B	On	